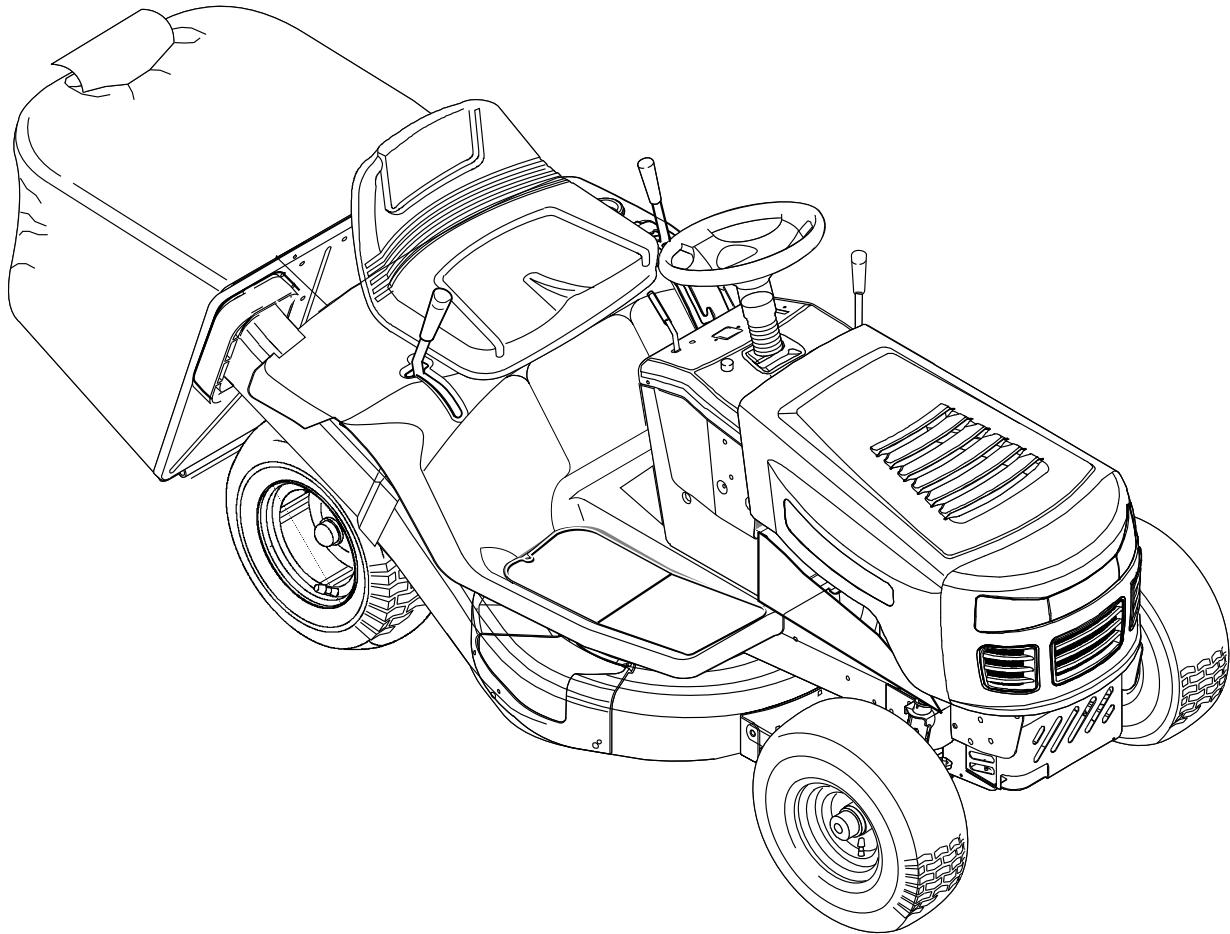




Parts List

Model
7800274

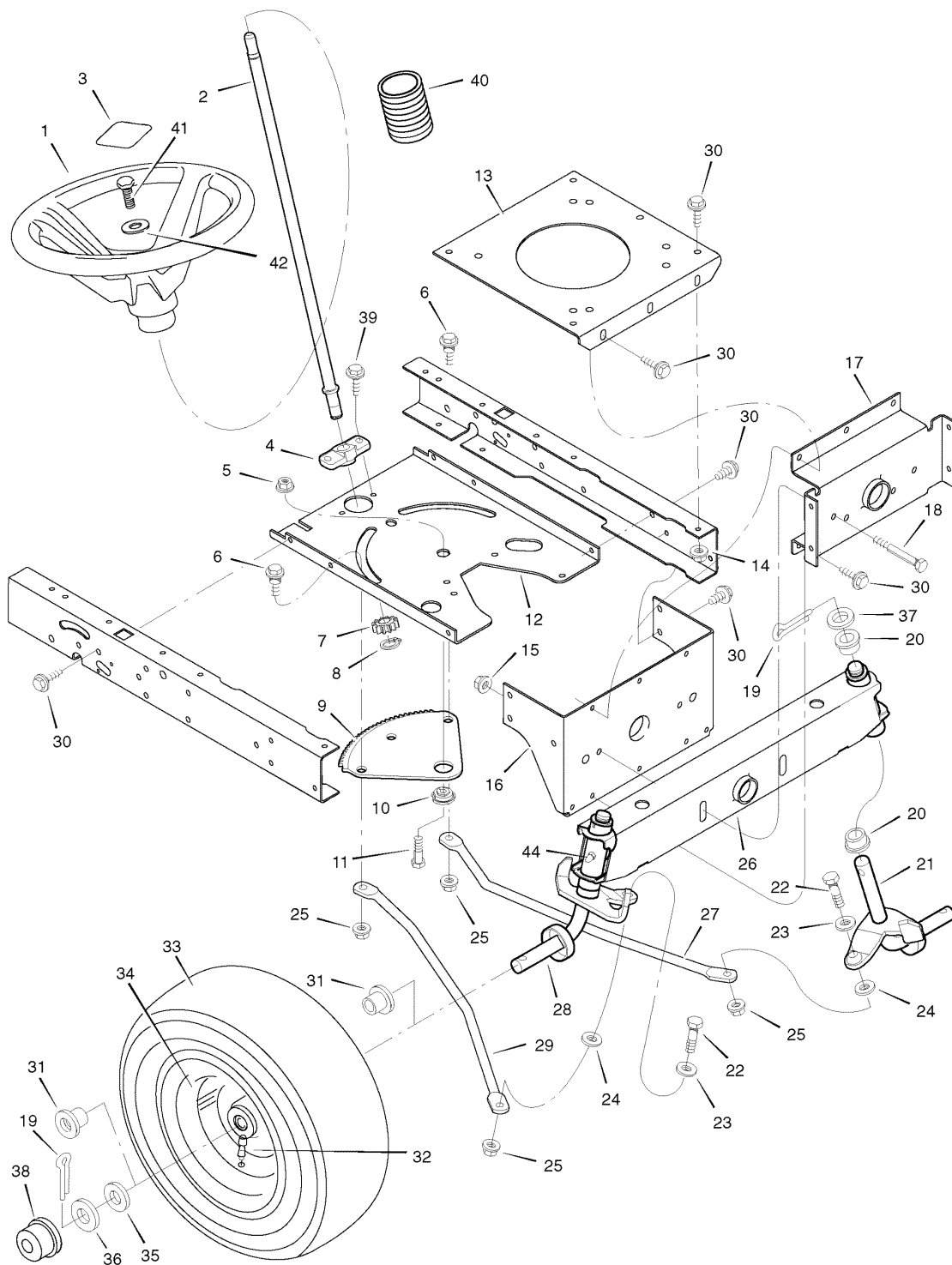


7101899
Revision 02
Rev. Date 05/2008
TP 400-4818-02-LT-R

| PRODUCT COMPONENTS | PAGES |
|---|--------------------------|
| Steering | 4 |
| Engine Mount | 8 |
| Motion Drive | 10 |
| Electrical System | 14 |
| Chassis & Hood | 16 |
| Decals | 20 |
| Grass Bagger | 22 |
| Mower Housing | 24 |
| Mower Housing Suspension | 28 |
| Torque Specification Chart | Inside Back Cover |

Steering

NOTE: Unless noted otherwise,
use the standard hardware torque
specification chart.



The above parts group applies to the following Mfg. Nos.:
7800274 - 312006x51A

Steering

| REF NO | PART NO. | DESCRIPTION |
|--------|---------------|---|
| 1 | 1001980MA | WHEEL, Steering |
| 2 | 690625MA | POST, Steering |
| 3 | 1001982MA | COVER, Steering Wheel |
| 4 | 094124MA | BEARING (Included with Ref. No. 2) |
| 5 | 7091601SM | NUT, Flange ** |
| 6 | 009x57MA | BOLT, Shoulder |
| 7 | 1001893MA | GEAR, Pinion (Included with Ref. No. 2) |
| 8 | 011x25MA | RING, Snap ** |
| 9 | 094121MA | GEAR, Sector |
| 10 | 094123MA | BEARING |
| 11 | 7027168SM | CAP SCREW, Hex Head, 5/16C X1 GR5 YZ |
| 12 | 7300867ZMA | PLATE, Steering |
| 13 | 7300863ZMA | PLATE, Engine |
| 14 | 015x88MA | NUT, Flange |
| 15 | 15x118MA | NUT, Flange |
| 16 | 7300751ZMA | BRACKET, Hanger |
| 17 | 7300742ZMA | AXLE, Hanger |
| 18 | 01x146MA | BOLT |
| 19 | 030x49MA | PIN, Cotter |
| 20 | 690150MA | BEARING |
| 21 | 1001299E701MA | SPINDLE ASSEMBLY, Left |
| 22 | 01x111MA | BOLT |
| 23 | 710083MA | WASHER |
| 24 | 017x53MA | WASHER |
| 25 | 7091619SM | NUT, Flange |
| 26 | 7400246ZYP | AXLE ASSEMBLY |
| 27 | 7101805ZMA | DRAG LINK, Left |
| 28 | 1001298E701MA | SPINDLE ASSEMBLY, Right |
| 29 | 7101806ZMA | DRAG LINK, Right |
| 30 | 26x249MA | SCREW |
| 31 | 091334MA | BEARING, Wheel |
| 32 | 024373MA | STEM, Valve |
| 33 | ----- | TIRE * |
| -- | 407924MA | TUBE |
| 34 | 7101866MA | WHEEL & TIRE ASSEMBLY |
| 35 | 17x195MA | WASHER |
| 36 | 17x192MA | WASHER |
| 37 | 1733001SM | WASHER |
| 38 | 094618MA | HUB CAP |
| 39 | 26x267MA | SCREW |
| 40 | 092059MA | BELLOWS |
| 41 | 0025x3MA | SCREW, Hex |
| 42 | 17x146MA | WASHER |

Footnotes

Note * When you order a tire, make sure to give the brand name of the tire so that the tread pattern on the tire will match.

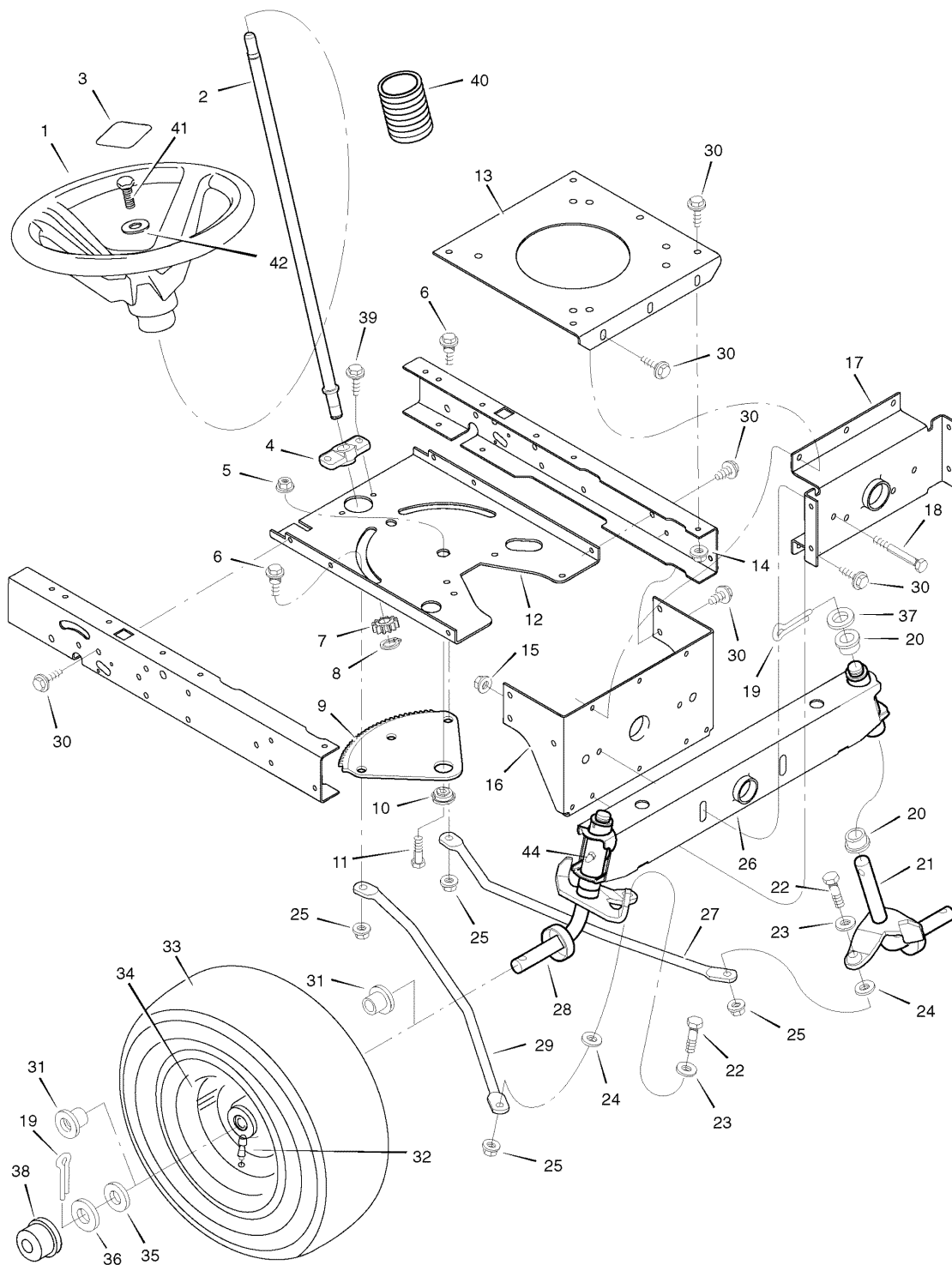
Note** This part included when ordering Ref. No. 2.

The above parts group applies to the following Mfg. Nos.:

7800274 - 312006x51A

Steering

NOTE: Unless noted otherwise,
use the standard hardware torque
specification chart.



The above parts group applies to the following Mfg. Nos.:
7800274 - 312006x51A

Steering

| REF NO | PART NO. | DESCRIPTION |
|--------|----------|-----------------|
| 44 | 092530MA | FITTING, Grease |

Footnotes

Note * When you order a tire, make sure to give the brand name of the tire so that the tread pattern on the tire will match.

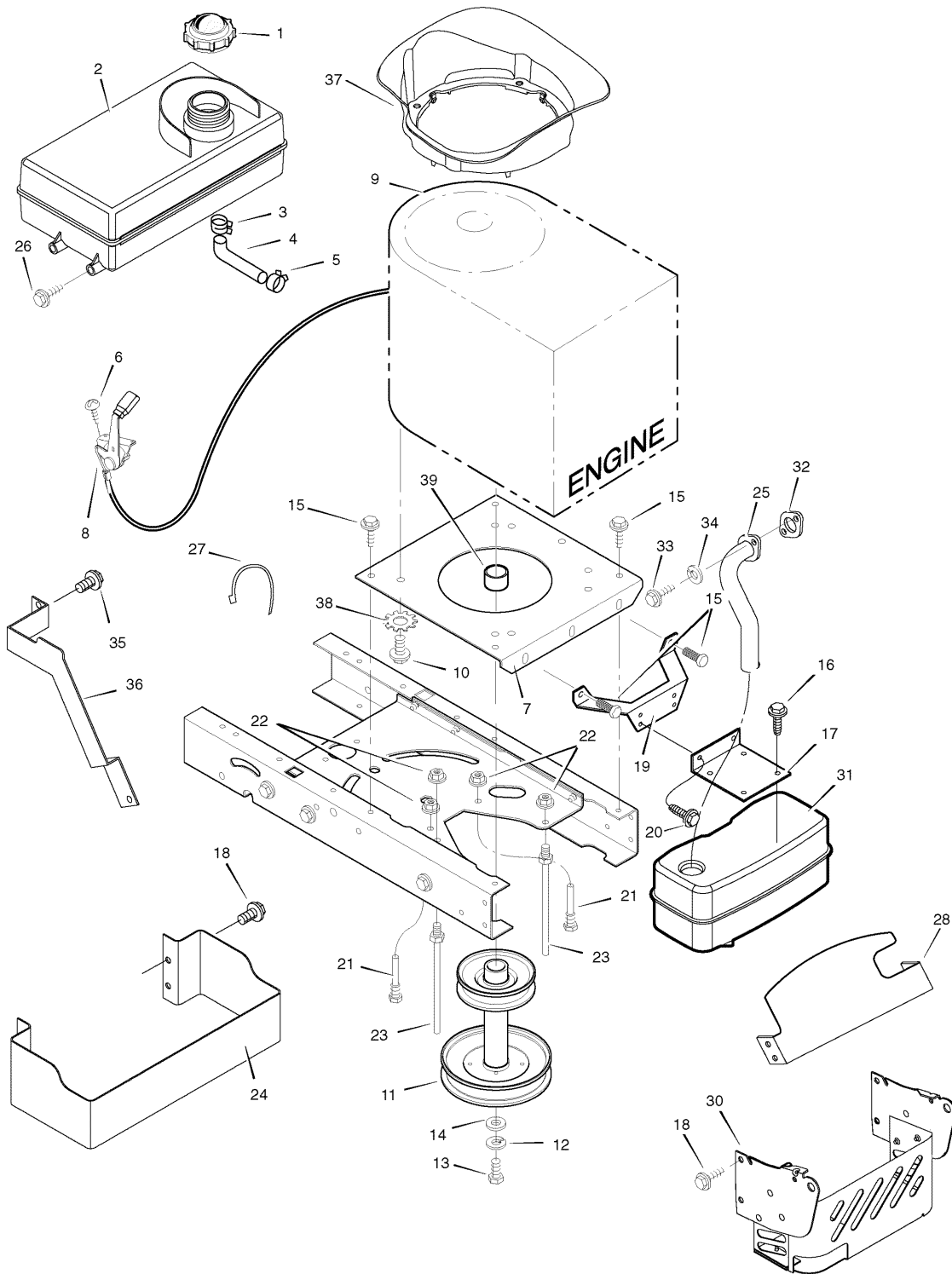
Note** This part included when ordering Ref. No. 2.

The above parts group applies to the following Mfg. Nos.:

7800274 - 312006x51A

Engine Mount

NOTE: Unless noted otherwise,
use the standard hardware torque
specification chart.



The above parts group applies to the following Mfg. Nos.:
7800274 - 312006x51A

Engine Mount

| REF NO | PART NO. | DESCRIPTION |
|--------|---------------|---|
| 1 | 092317MA | FUEL CAP (Included with Ref. No. 2) |
| 2 | 7601092MA | TANK, Fuel 1.4 Gal. |
| 3 | 095197MA | CLAMP, Hose (Included with Ref. No. 2) |
| 4 | 7601033MA | FUEL LINE (Must cut to length) (Included with Ref. No. 2) |
| 5 | 095197MA | CLAMP, Hose (Included with Ref. No. 2) |
| 6 | 26x201MA | SCREW |
| 7 | 7300863ZMA | PLATE, Engine |
| 8 | 092371MA | THROTTLE CONTROL |
| 9 | ----- | ENGINE, Briggs & Stratton * (Model: 2178070142B1) |
| 10 | 0025x7MA | BOLT, Engine Mount |
| 11 | 690439MA | STACK PULLEY ASSEMBLY |
| 12 | 019x35MA | LOCKWASHER |
| 13 | 01x140MA | BOLT, Hex |
| 14 | 17x170MA | WASHER |
| 15 | 26x249MA | SCREW |
| 16 | 26x229MA | SCREW |
| 17 | 7300760AMA | BRACKET, Muffler |
| 18 | 26x277MA | SCREW |
| 19 | 7300817ZMA | BRACKET, Muffler Mount |
| 20 | 26x213MA | SCREW |
| 21 | 094384MA | GUIDE, Belt |
| 22 | 015x79MA | NUT, Flange |
| 23 | 094066MA | GUIDE, Belt |
| 24 | 7300783AMA | GUARD, Heat Shield |
| 25 | 1001496MA | EXHAUST TUBE, Single |
| 26 | 26x253MA | SCREW |
| 27 | 032618MA | TIE, Strap, 5.38 Long |
| 28 | 1740502AMA | GUARD, Heat Shield, Upper |
| 30 | 7500709AMA | SHIELD, Heat |
| 31 | 094654MA | MUFFLER |
| 32 | 692236 | GASKET |
| 33 | 06x103MA | SCREW |
| 34 | 018x15MA | WASHER |
| 35 | 06x104MA | BOLT, Washer Hex Head |
| 36 | 1740504E701MA | GUARD, Exhaust Pipe |
| 37 | 1740503MA | PLENUM, X1 M28/31 |
| 38 | 0019x8MA | WASHER, Star .38 0.68X |
| 39 | 093077MA | SPACER, Engine |

Footnotes

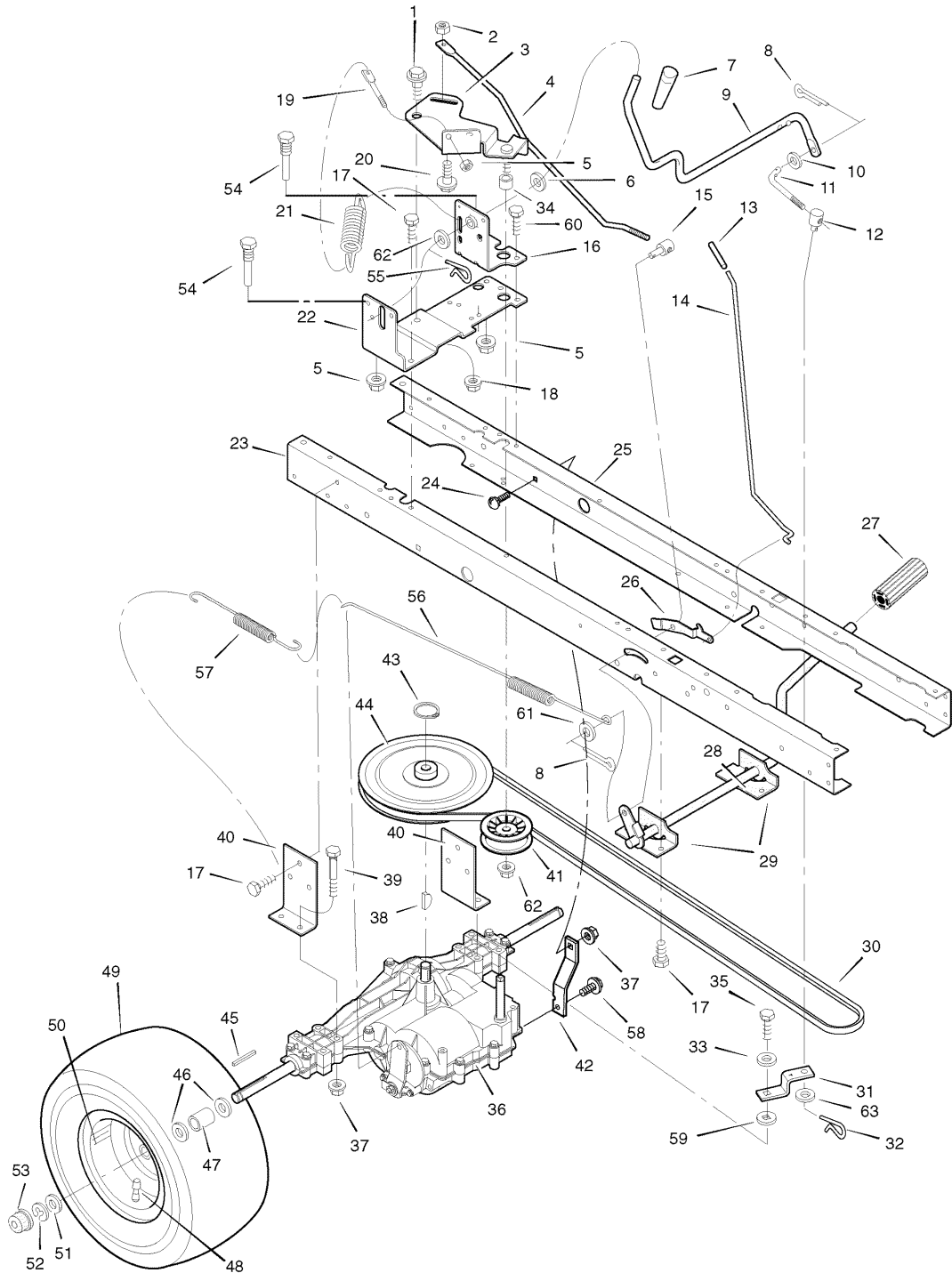
Note* For information on Replacement Parts for this engine contact the manufacturer.

The above parts group applies to the following Mfg. Nos.:

7800274 - 312006x51A

Motion Drive

NOTE: Unless noted otherwise, use the standard hardware torque specification chart.



The above parts group applies to the following Mfg. Nos.:
7800274 - 312006x51A

Motion Drive

| REF NO | PART NO. | DESCRIPTION |
|--------|---------------|---------------------------|
| 1 | 009x39MA | BOLT, Shoulder |
| 2 | 015x89MA | NUT, Hex |
| 3 | 690273MA | ARM, Idler |
| 4 | 094041ZMA | ROD, Clutch |
| 5 | 7091601SM | NUT |
| 6 | 17x102MA | WASHER |
| 7 | 1741756MA | GRIP |
| 8 | 030x20MA | PIN, Cotter |
| 9 | 094043ZMA | LEVER, Shift |
| 10 | 017x47MA | WASHER |
| 11 | 094044ZMA | LINK, Shift |
| 12 | 021920ZMA | NUT, Adjuster |
| 13 | 1741757MA | GRIP |
| 14 | 1001245ZMA | ROD, Parking Brake |
| 15 | 094815ZMA | NUT, Adjuster |
| 16 | 1001303ZMA | BRACKET, Shift Pivot |
| 17 | 26x249MA | SCREW |
| 18 | 015x84MA | NUT |
| 19 | 094042ZMA | MOUNT, Stud Spring |
| 20 | 009x54MA | BOLT, Shoulder |
| 21 | 165x116MA | SPRING, Extension |
| 22 | 7300824ZMA | BRACKET, Right Shifter |
| 23 | 1001928E701MA | FRAME, Right |
| 24 | 002x53MA | BOLT, Carriage |
| 25 | 1001927E701MA | FRAME, Left |
| 26 | 094045ZMA | LATCH, Parking Brake |
| 27 | 021544MA | PEDAL |
| 28 | 7400256ZMA | LEVER, Brake/Clutch |
| 29 | 1001117E701MA | BRACKET, Pedal |
| 30 | 037x87MA | BELT, Motion Drive |
| 31 | 094031ZMA | YOKE, Shift |
| 32 | 0031x6MA | PIN, Hair |
| 33 | 017x38MA | WASHER |
| 34 | 690369MA | SPACER |
| 35 | 06x105MA | BOLT |
| 36 | ----- | TRANSAXLE ** |
| 37 | 015x88MA | NUT |
| 38 | 020697MA | KEY, Woodruff |
| 39 | 01x155MA | BOLT |
| 40 | 7300769ZMA | BRACKET, Transaxle |
| 41 | 690409MA | PULLEY |
| 42 | 7300845ZMA | BRACKET, Torque Strap, LH |
| 43 | 0011x7MA | RING RETAINER |

Footnotes

Note* When you order a tire, make sure to give the brand name of the tire so that the tread pattern on the tire will match.

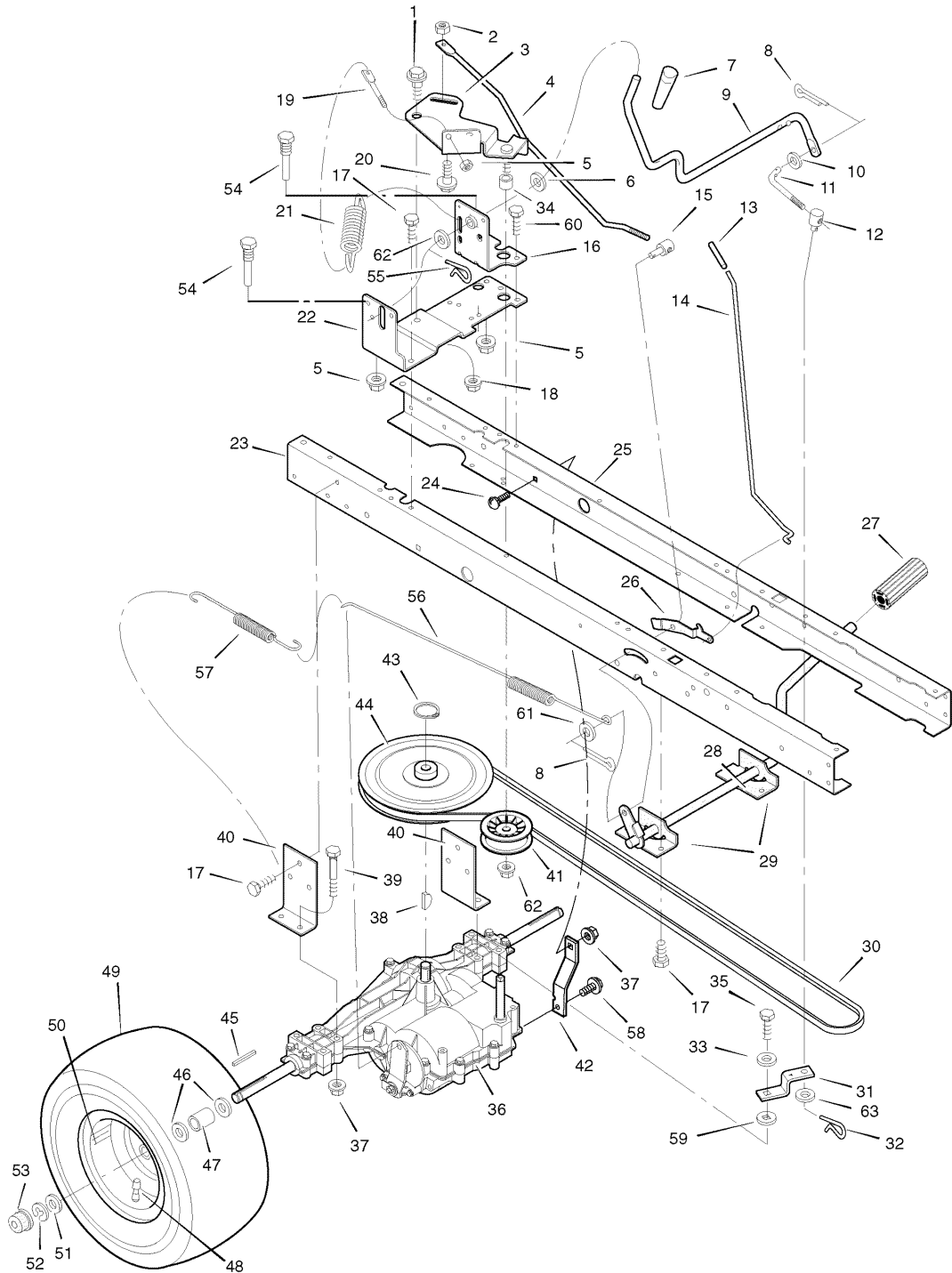
Note** For Replacement Parts see the Transaxle manufacturer.

The above parts group applies to the following Mfg. Nos.:

7800274 - 312006x51A

Motion Drive

NOTE: Unless noted otherwise,
use the standard hardware torque
specification chart.



The above parts group applies to the following Mfg. Nos.:
7800274 - 312006x51A

Motion Drive

| REF NO | PART NO. | DESCRIPTION |
|---------------|-----------------|------------------------|
| 44 | 095094MA | PULLEY Drive |
| 45 | 021553MA | KEY, Square |
| 46 | 17x160MA | WASHER |
| 47 | 690554ZMA | SPACER, Transaxle |
| 48 | 024373MA | STEM, Valve |
| 49 | 091923MA | TIRE * |
| -- | 407049MA | TUBE (Not Illustrated) |
| 50 | 7101863MA | WHEEL & TIRE ASSEMBLY |
| 51 | 17x195MA | WASHER |
| 52 | 0011x3MA | E-Ring |
| 53 | 094618MA | HUB CAP |
| 54 | 093349MA | GUIDE, Belt |
| 55 | 0031x4MA | PIN, Hair |
| 56 | 165x141MA | SPRING, Extension |
| 57 | 165x92MA | SPRING, Extension |
| 58 | 26x216MA | SCREW |
| 59 | 17x148MA | WASHER |
| 60 | 26x267MA | SCREW |
| 61 | 17x169MA | WASHER |
| 62 | 015x98MA | NUT, Hex |
| 63 | 017x53MA | WASHER |

Footnotes

Note* When you order a tire, make sure to give the brand name of the tire so that the tread pattern on the tire will match.

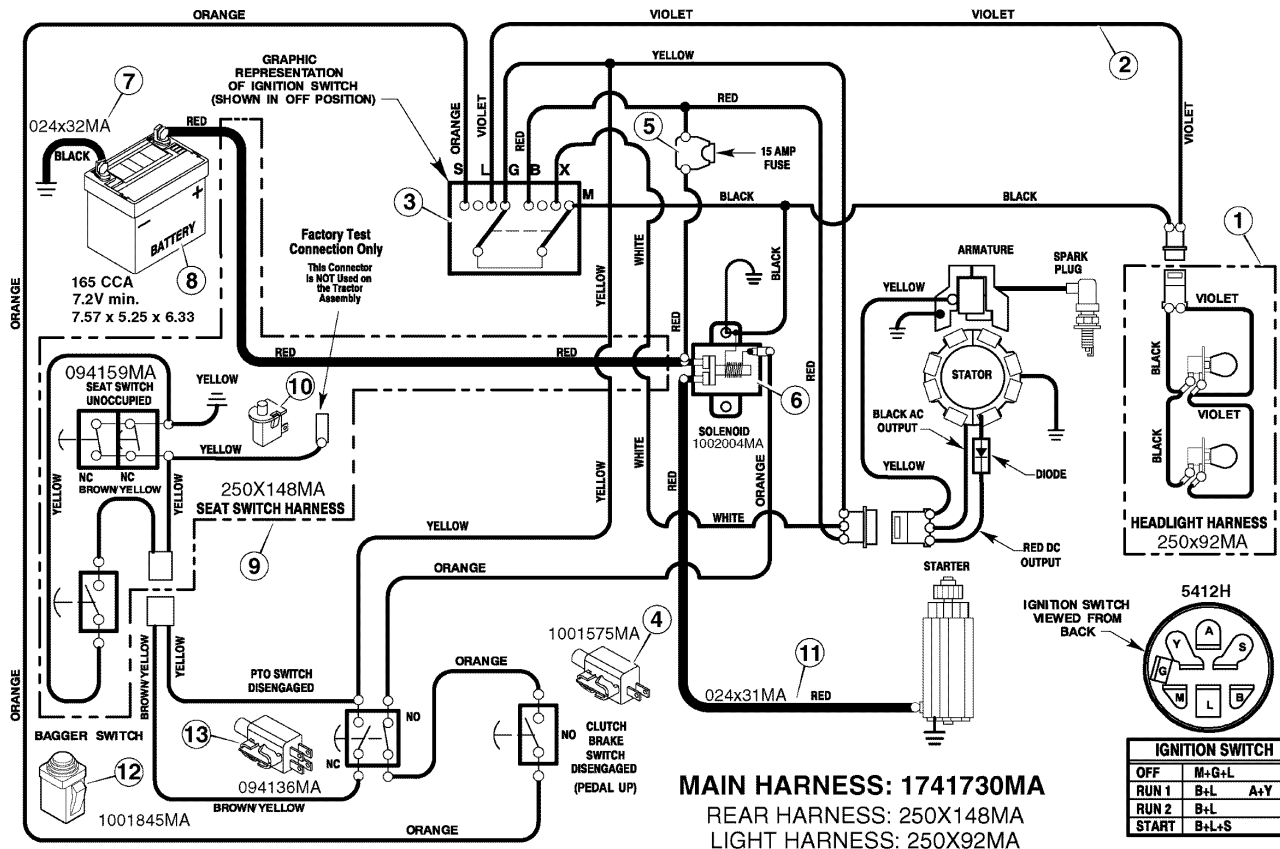
Note** For Replacement Parts see the Transaxle manufacturer.

The above parts group applies to the following Mfg. Nos.:

7800274 - 312006x51A

Electrical System

NOTE: Unless noted otherwise, use the standard hardware torque specification chart.



The above parts group applies to the following Mfg. Nos.:
 7800274 - 312006x51A

Electrical System

| REF NO | PART NO. | DESCRIPTION |
|--------|-----------|--|
| 1 | 250x92MA | HARNESS, Light Wire |
| -- | 1001716MA | SOCKET, Light |
| -- | 090084MA | BULB, Light |
| 2 | 250X148MA | HARNESS, Chassis Wire |
| 3 | 5412H | SWITCH, Ignition |
| -- | 020729MA | KEY, Ignition |
| -- | 091489MA | NUT, Hex |
| -- | 091488MA | CAP, Ignition |
| 4 | 1001575MA | SWITCH, Limit |
| 5 | 302031MA | FUSE |
| -- | 407078MA | HOLDERS, Fuse |
| 6 | 1002004MA | SOLENOID |
| -- | 26x229MA | SCREW, Mounting |
| -- | 15x116MA | LOCKNUT |
| 7 | 024x32MA | CABLE, Battery Ground |
| -- | 26x229MA | SCREW, Ground Cable |
| 8 | ----- | BATTERY 165 CCA 7.2V min. 7.57 x 5.25 x 6.33 |
| -- | 002x82MA | BOLT, Carriage |
| -- | 014x79MA | WINGNUT |
| -- | 690604MA | BOOT, Battery Terminal, Positive |
| 9 | 250x130MA | HARNESS, Seat Switch Wire |
| 10 | 094159MA | SWITCH, Seat Sensor |
| 11 | 024x31MA | CABLE |
| 12 | 1001845MA | SWITCH, Bag Sensor |
| 13 | 094136MA | SWITCH, Limit |

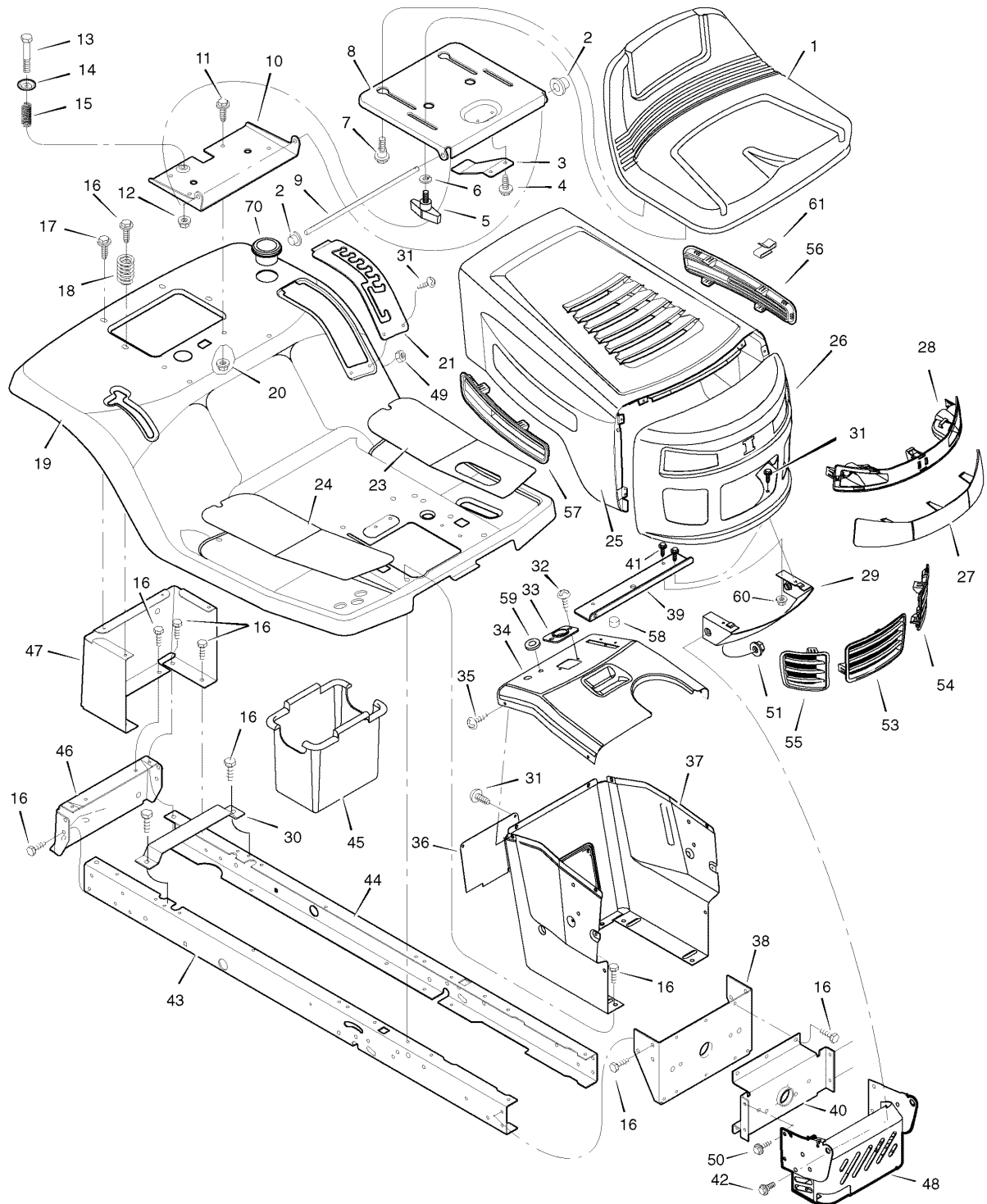
Footnotes

The above parts group applies to the following Mfg. Nos.:

7800274 - 312006x51A

Chassis & Hood

NOTE: Unless noted otherwise,
use the standard hardware torque
specification chart.



The above parts group applies to the following Mfg. Nos.:
7800274 - 312006x51A

Chassis & Hood

| REF NO | PART NO. | DESCRIPTION |
|--------|------------|----------------------|
| 1 | 690566MA | SEAT |
| 2 | 028X23MA | CAP, Push On |
| 3 | 094057MA | SPRING |
| 4 | 26X229MA | SCREW |
| 5 | 1001054MA | BOLT, Wing |
| 6 | 017X47MA | WASHER |
| 7 | 009X56MA | BOLT, Shoulder |
| 8 | 7300875ZMA | SUPPORT, Seat |
| 9 | 094156ZMA | ROD, Pivot |
| 10 | 7300794ZMA | BRACKET, Pivot |
| 11 | 001X45MA | BOLT |
| 12 | 015X89MA | NUT |
| 13 | 009X55MA | BOLT, Shoulder |
| 14 | 094155ZMA | WASHER |
| 15 | 164X31MA | SPRING |
| 16 | 26X249MA | SCREW |
| 17 | 26X263MA | SCREW |
| 18 | 164X30MA | SPRING |
| 19 | 7300843ZMA | DECK, Seat |
| 20 | 15X123MA | NUT |
| 21 | 7300839ZMA | PLATE, Lift |
| 23 | 094999MA | MAT, Left |
| 24 | 094998MA | MAT, Right |
| 25 | 7300786ZMA | HOOD, WM1 |
| 26 | 7300778TMA | GRILLE |
| 27 | 1001806MA | LENS |
| 28 | 1001805MA | HOUSING, Headlamp |
| 29 | 1740530TMA | BRACKET, Lower Pivot |
| 30 | 7300741ZMA | SUPPORT, Battery |
| 31 | 26X270MA | SCREW |
| 32 | 26X238MA | SCREW |
| 33 | 1001491MA | BEARING, Steering |
| 34 | 7300774TMA | DASH |
| 35 | 26X201MA | SCREW |
| 36 | 7300750TMA | PANEL, Access |
| 37 | 7300872TMA | SUPPORT, Dash |
| 38 | 7300751ZMA | BRACKET, Rear Hanger |
| 39 | 1740529TMA | BRACKET, Support |
| 40 | 7300742ZMA | AXLE, Hanger |
| 41 | 26X263MA | SCREW |
| 42 | 009X58MA | BOLT, Shoulder |
| 43 | 7300870ZMA | FRAME, Right |
| 44 | 7300869ZMA | FRAME, Left |

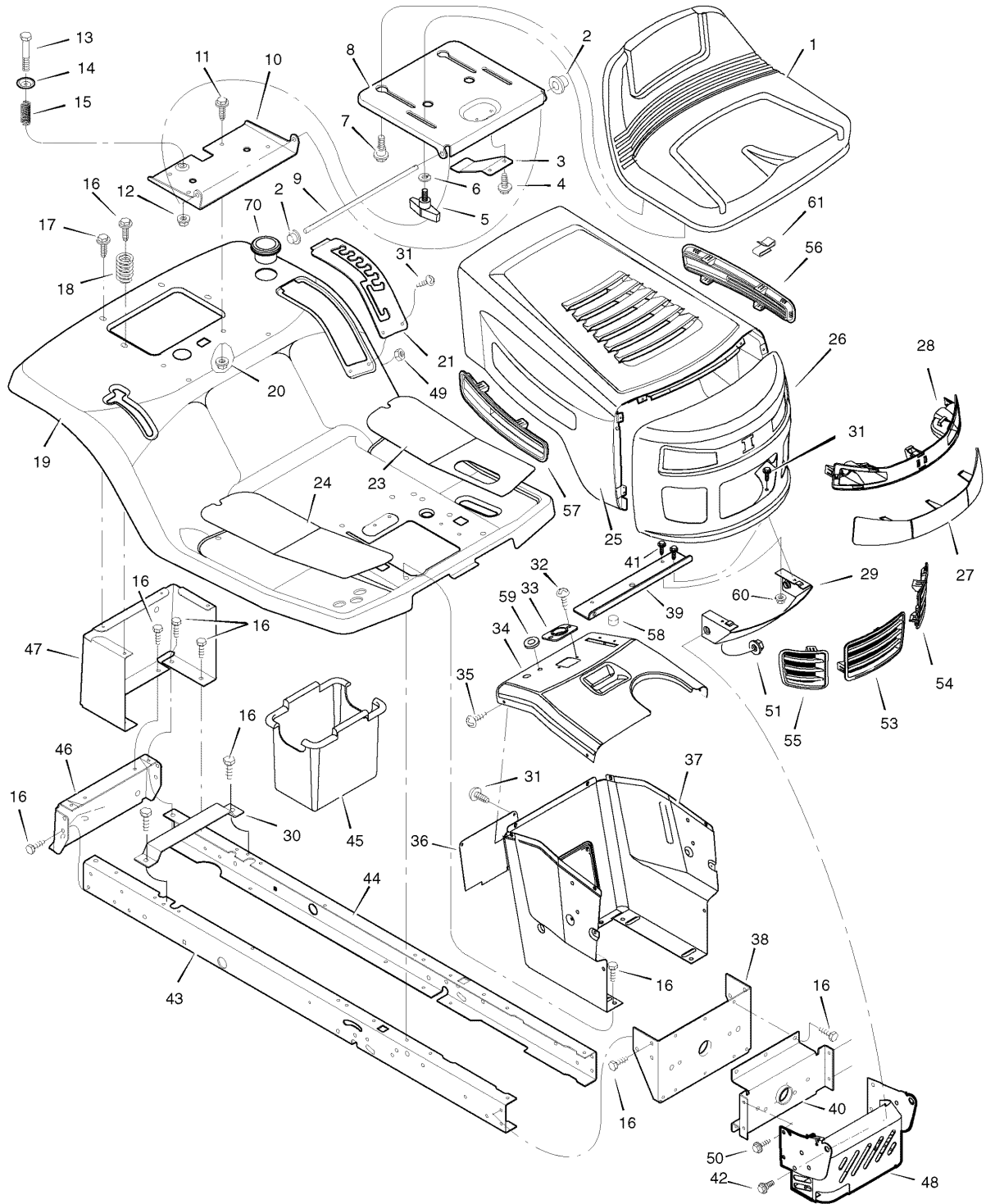
Footnotes

The above parts group applies to the following Mfg. Nos.:

7800274 - 312006x51A

Chassis & Hood

NOTE: Unless noted otherwise,
use the standard hardware torque
specification chart.



The above parts group applies to the following Mfg. Nos.:
7800274 - 312006x51A

Chassis & Hood

| REF NO | PART NO. | DESCRIPTION |
|---------------|-----------------|--------------------------|
| 45 | 690424MA | CONTAINER, Battery |
| 46 | 7300864ZMA | PLATE, Hitch |
| 47 | 7300832ZMA | PANEL, Rear |
| 48 | 1740501E701MA | SHIELD, Heat |
| 49 | 015X81MA | NUT |
| 50 | 26X277MA | SCREW |
| 51 | 15X124MA | NUT |
| 53 | 1741762MA | INSERT, Center Grille |
| 54 | 1741763MA | INSERT, Left Grille |
| 55 | 1741764MA | INSERT, Right Grille |
| 56 | 1741760MA | INSERT, Left Hood |
| 57 | 1741761MA | INSERT, Right Hood |
| 58 | 094376MA | BUMPER |
| 59 | 1001755MA | GROMMET, Parking Brake |
| 60 | 015X82MA | NUT |
| 61 | 028X83MA | S-CLIP, Black |
| 70 | 1001542MA | HOLDER, Cup |
| -- | 1002050MA | PARTS BAG, Assembly |
| -- | 7101898 | MANUAL, Instruction Book |
| -- | 1740468 | MANUAL, Parts List |

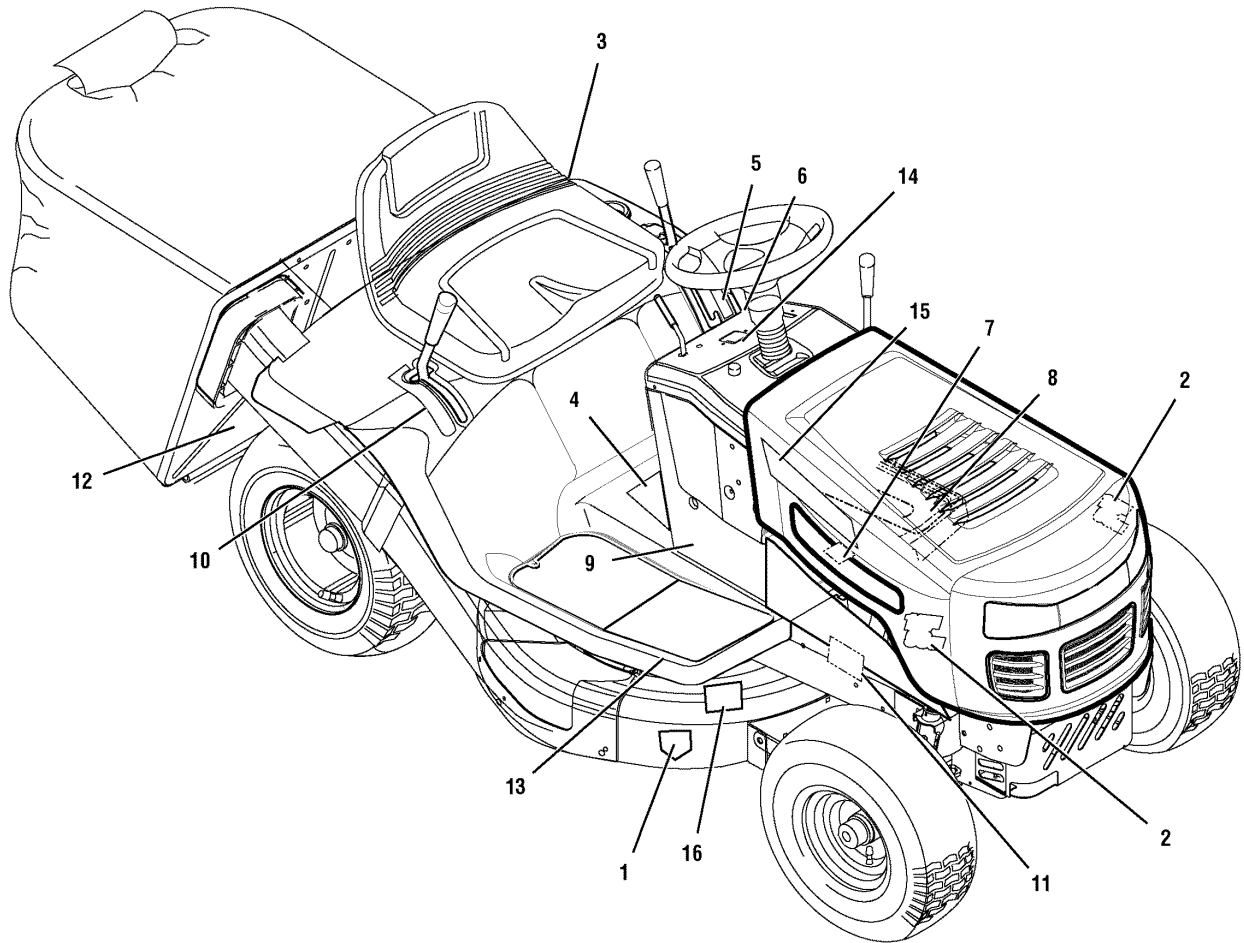
Footnotes

The above parts group applies to the following Mfg. Nos.:

7800274 - 312006x51A

Decals

NOTE: Unless noted otherwise,
use the standard hardware torque
specification chart.



The above parts group applies to the following Mfg. Nos.:

7800274 - 312006x51A

Decals

| REF NO | PART NO. | DESCRIPTION |
|--------|-----------|----------------------------------|
| 1 | 48X4033MA | DECAL, Cut Fingers Signal |
| 2 | 7101895MA | DECAL, 145/76, Black, Red, White |
| 3 | 44x6595MA | DECAL, Gas |
| 4 | 48X4032MA | DECAL, Warning Export |
| 5 | 44X7026MA | DECAL, 7 Position Cut Height |
| 6 | 44X7027MA | DECAL, Deck Level |
| 7 | 48X4034MA | DECAL, No Step Export |
| 8 | 44X5437MA | DECAL, Brake/Clutch Export |
| 9 | 44x6277MA | DECAL, B&S Logo |
| 10 | 48X5451MA | DECAL, 5 Speed |
| 11 | 44X5936MA | DECAL, Heat Shield Warning |
| 12 | 48X511MA | DECAL, Warning Load Limit Export |
| 13 | 44X6828MA | DECAL, Warning Pinch Point |
| 14 | 44X6817MA | DECAL, Dash Symbols W1 |
| 15 | 1740552MA | DECAL, MURRAY L & R |
| 16 | 48X5911MA | DECAL, 100db Export |

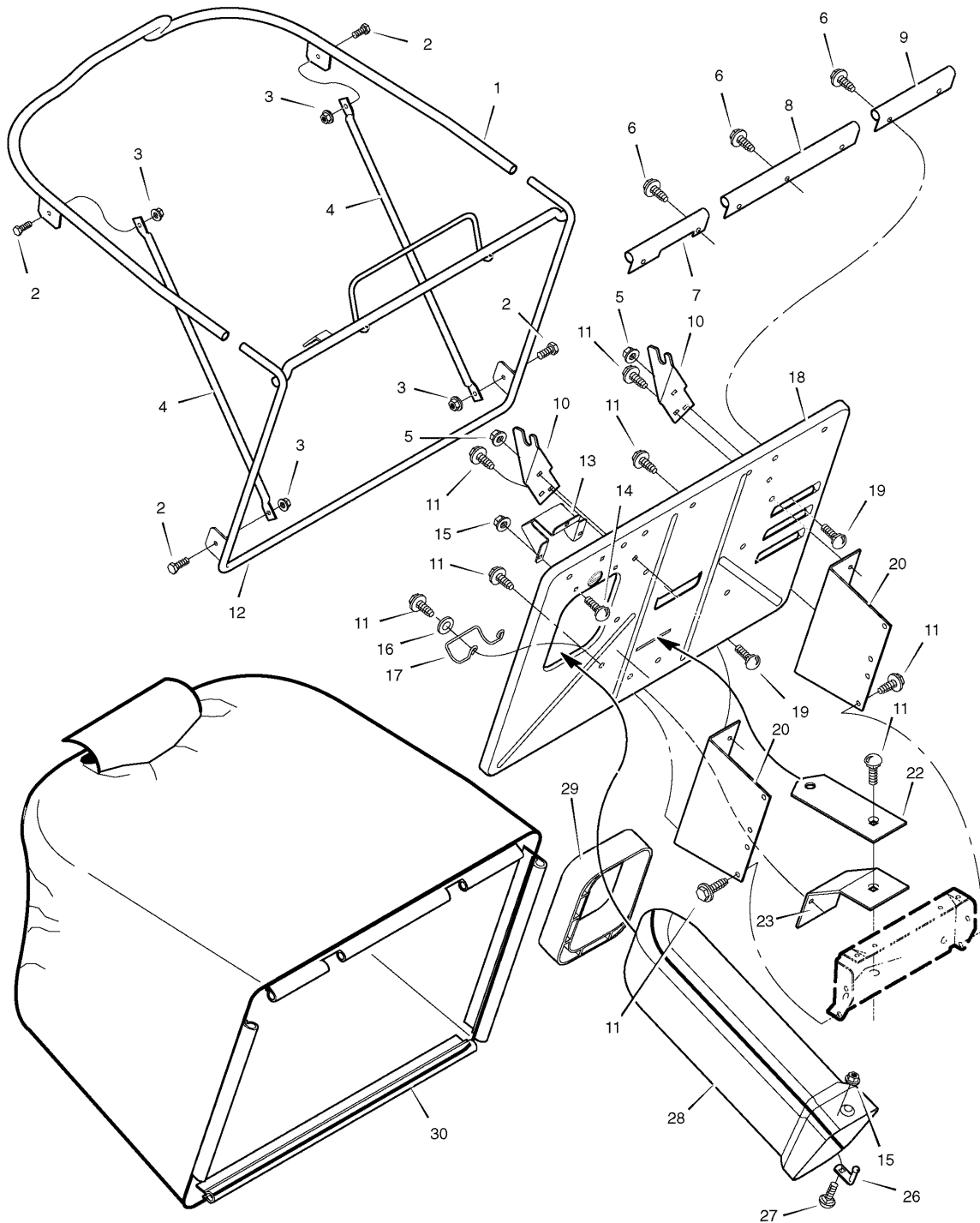
Footnotes

The above parts group applies to the following Mfg. Nos.:

7800274 - 312006x51A

Grass Bagger

NOTE: Unless noted otherwise,
use the standard hardware torque
specification chart.



The above parts group applies to the following Mfg. Nos.:
7800274 - 312006x51A

Grass Bagger

| REF NO | PART NO. | DESCRIPTION |
|--------|------------|---|
| 1 | 690404MA | TUBE, Top |
| 2 | 01x121MA | BOLT |
| 3 | 15x116MA | NUT |
| 4 | 690433MA | STRUT, Bag |
| 5 | 015x79MA | NUT, Flange |
| 6 | 0193x2MA | FASTNER, Panel |
| 7 | 690491MA | SEAL, Bag (Right End) |
| 8 | 690492MA | SEAL, Bag (Center) |
| 9 | 690493MA | SEAL, Bag (Left End) |
| 10 | 7300785ZMA | HINGE |
| 11 | 26x249MA | SCREW |
| 12 | 690403MA | ASSEMBLY, Bag Frame |
| 13 | 7300768ZMA | BRACKET, Switch |
| 14 | 002x82MA | BOLT, Carriage |
| 15 | 015x89MA | NUT, Flange |
| 16 | 17x185MA | WASHER |
| 17 | 690402MA | LATCH, Spring |
| 18 | 7300833ZMA | PAN, Rear |
| 19 | 002x53MA | BOLT, Carriage |
| 20 | 7300731ZMA | BRACKET, Bagger Mounting |
| 22 | 7300835ZMA | PLATE, Hitch |
| 23 | 7300757ZMA | BRACKET, Lower Mounting |
| 26 | 054563MA | PIN, Latch |
| 27 | 002x39MA | BOLT, Carriage |
| 28 | 690368MA | TUBE, Connecting |
| 29 | 690429MA | GROMMET, Extension Tube |
| 30 | 690438MA | BAG, Grass |
| 31 | 690480MA | ASSEMBLY, Grass Bag (Includes Ref. No's. 1, 4, 12 & 30) |

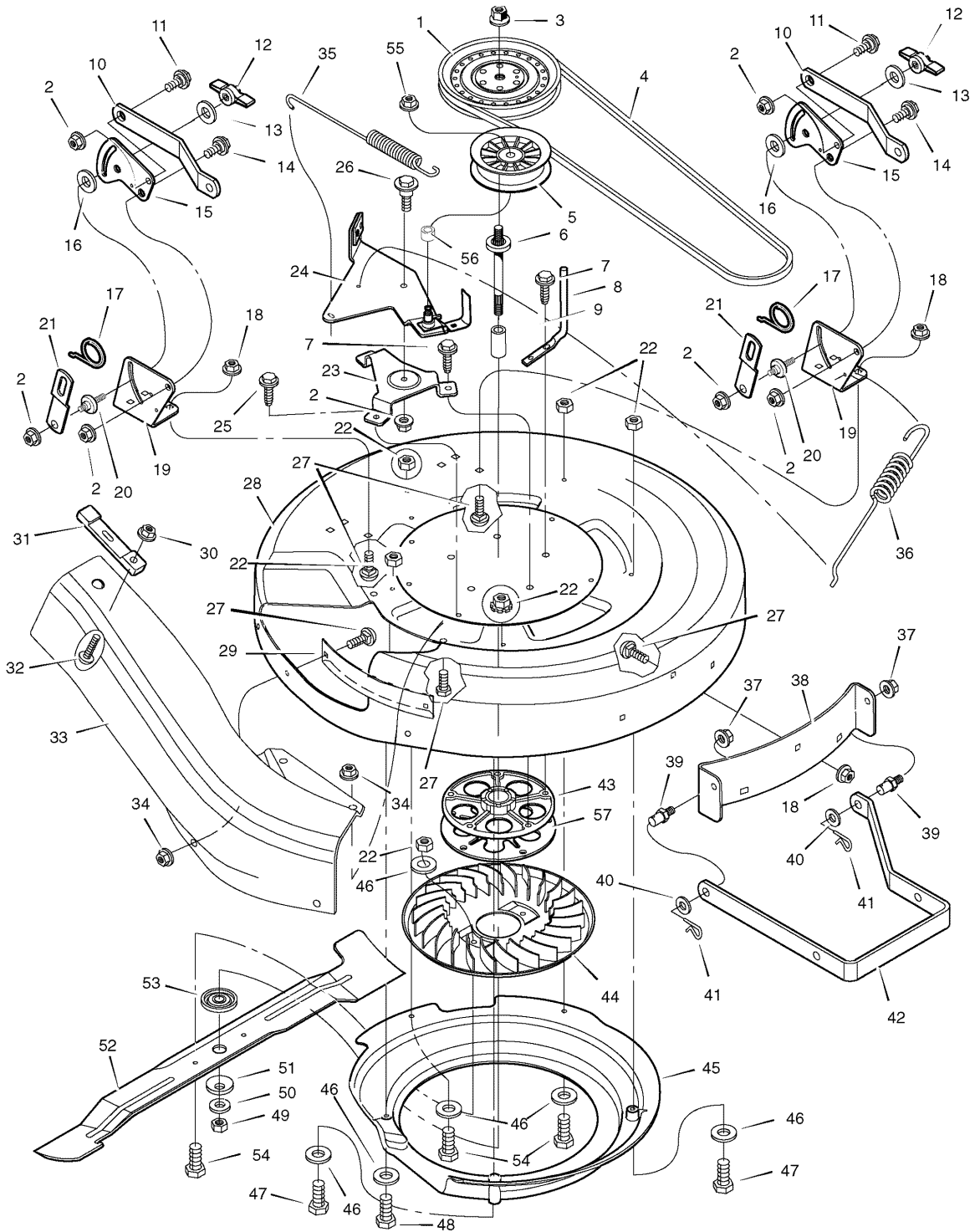
Footnotes

The above parts group applies to the following Mfg. Nos.:

7800274 - 312006x51A

Mower Housing

NOTE: Unless noted otherwise,
use the standard hardware torque
specification chart.



The above parts group applies to the following Mfg. Nos.:
7800274 - 312006x51A

Mower Housing

| REF NO | PART NO. | DESCRIPTION |
|--------|------------|---------------------------|
| 1 | 690432MA | PULLEY |
| 2 | 015x84MA | NUT, Flange |
| 3 | 15x140MA | NUT |
| 4 | 037x74MA | BELT, Blade |
| 5 | 091801MA | PULLEY, Idler |
| 6 | 094129MA | MANDREL |
| 7 | 025x23MA | SCREW |
| 8 | 092424MA | GUIDE, Belt |
| 9 | 094130MA | SPACER |
| 10 | 7300826ZMA | BRACKET, Rear Suspension |
| 11 | 009x52MA | BOLT, Shoulder |
| 12 | 094068MA | KNOB |
| 13 | 017x45MA | WASHER |
| 14 | 009x51MA | BOLT, Shoulder |
| 15 | 7300840ZMA | Plate, Suspension |
| 16 | 094137MA | PAD, Friction |
| 17 | 166x43MA | SPRING |
| 18 | 015x79MA | NUT, Flange |
| 19 | 7300737ZMA | BRACKET, Rear Deck |
| 20 | 095194MA | PIN, Hanger |
| 21 | 7300791ZMA | LINK, Lift |
| 22 | 7090585MA | NUT |
| 23 | 7300754ZMA | BRACKET, Idler Arm |
| 24 | 1002076MA | ASSEMBLY, Idler Arm & Pad |
| 25 | 26x249MA | SCREW |
| 26 | 009x39MA | BOLT, Shoulder |
| 27 | 002x64MA | BOLT, Carriage |
| 28 | 7500695ZMA | HOUSING, Blade |
| 29 | 7300730ZMA | BAFFLE, Deck, RH |
| 30 | 015x88MA | NUT, Flange |
| 31 | 054695MA | STRAP, Rubber |
| 32 | 01x139MA | SCREW |
| 33 | 690367MA | CHUTE |
| 34 | 015x79MA | NUT |
| 35 | 165x118MA | SPRING, PTO |
| 36 | 165x140MA | SPRING, Extension |
| 37 | 015x84MA | NUT, Flange |
| 38 | 7300740ZMA | BRACKET, Front Deck |
| 39 | 094067MA | PIN, Threaded Shoulder |
| 40 | 017x91MA | WASHER |
| 41 | 0031x4MA | PIN, Hair |
| 42 | 7300784ZMA | HANGER, Front |
| 43 | 1401275MA | HOUSING, Jackshaft |

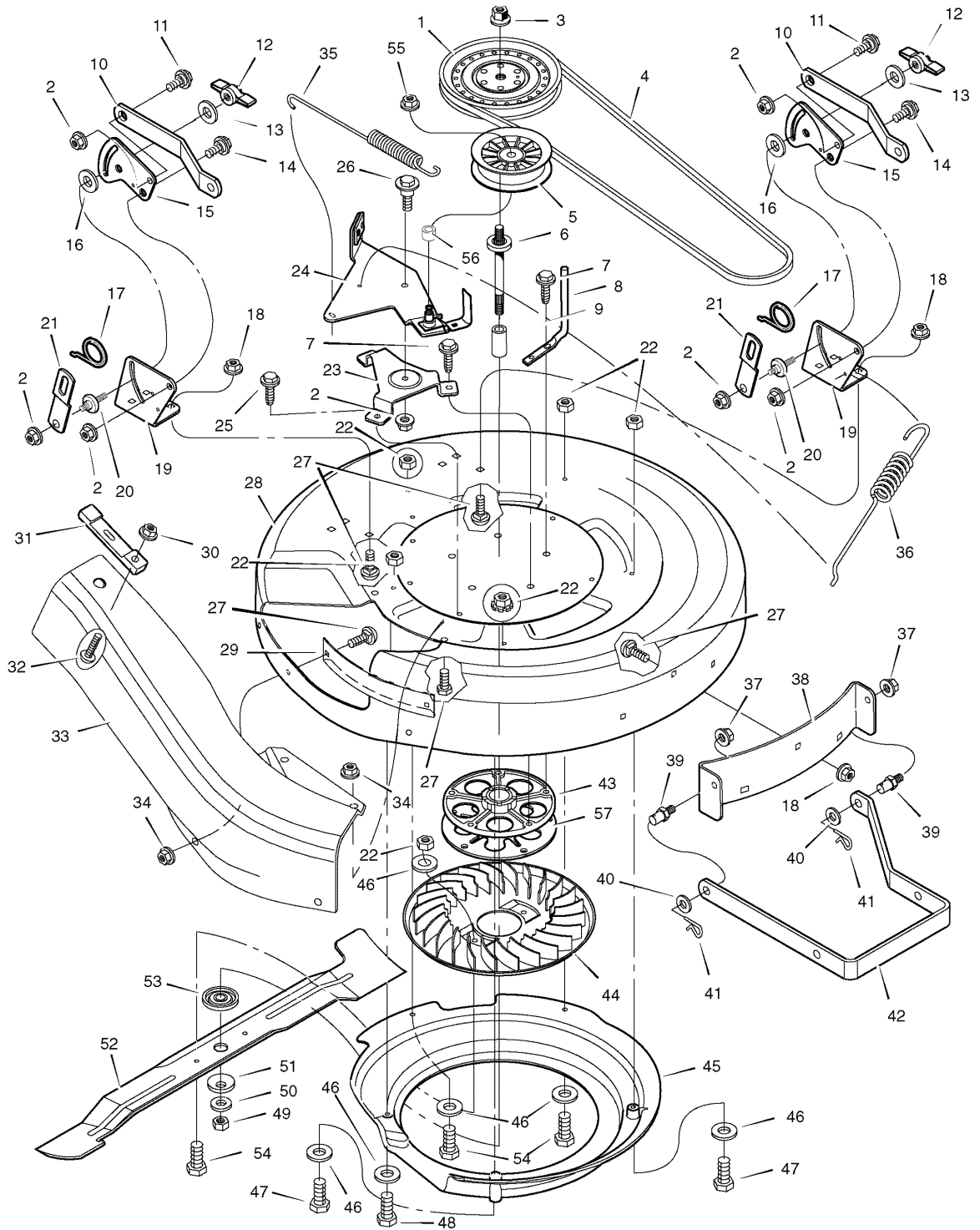
Footnotes

The above parts group applies to the following Mfg. Nos.:

7800274 - 312006x51A

Mower Housing

NOTE: Unless noted otherwise,
use the standard hardware torque
specification chart.



The above parts group applies to the following Mfg. Nos.:
7800274 - 312006x51A

Mower Housing

| REF NO | PART NO. | DESCRIPTION |
|---------------|-----------------|--------------------------|
| 44 | 690359MA | FAN, Assist |
| 45 | 1001237MA | HOUSING, Fan |
| 46 | 017x37MA | WASHER |
| 47 | 001x71MA | BOLT |
| 48 | 01x106MA | BOLT |
| 49 | 15x100MA | NUT |
| 50 | 17x165MA | WASHER |
| 51 | 17x166MA | WASHER, Belleville |
| 52 | 1002068E701MA | BLADE |
| 53 | 092466MA | ADAPTER, Blade |
| 54 | 01x121MA | BOLT |
| 55 | 015x98MA | NUT, Flange |
| 56 | 690369MA | SPACER |
| 57 | 7300836ZMA | PLATE, Jackshaft Support |

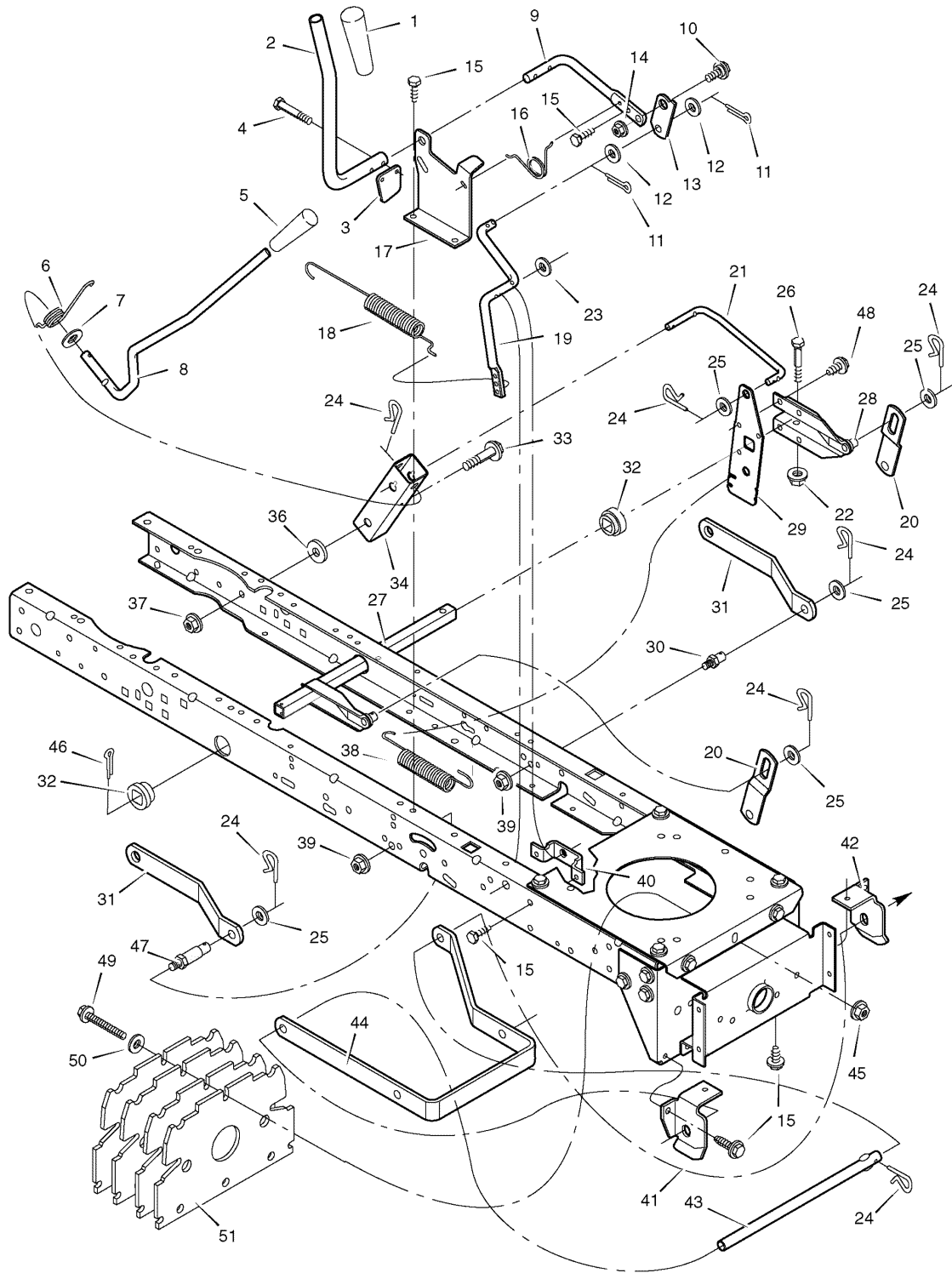
Footnotes

The above parts group applies to the following Mfg. Nos.:

7800274 - 312006x51A

Mower Housing Suspension

NOTE: Unless noted otherwise,
use the standard hardware torque
specification chart.



The above parts group applies to the following Mfg. Nos.:
7800274 - 312006x51A

Mower Housing Suspension

| REF NO | PART NO. | DESCRIPTION |
|--------|--------------|--------------------------|
| 1 | 1741757MA | GRIP |
| 2 | 094157ZMA | HANDLE, PTO |
| 3 | 094022ZMA | PAD, Switch |
| 4 | 0025x3MA | SCREW, Hex |
| 5 | 1741756MA | GRIP |
| 6 | 166x40MA | SPRING |
| 7 | 17x103MA | WASHER |
| 8 | 690533MA | HANDLE, Lift |
| 9 | 094017ZMA | LEVER, PTO |
| 10 | 009x39MA | BOLT, Shoulder |
| 11 | 030x20MA | PIN, Cotter |
| 12 | 017x57MA | WASHER |
| 13 | 690277MA | LINK, PTO |
| 14 | 015x84MA | NUT, Flange |
| 15 | 26x249MA | SCREW |
| 16 | 166x39MA | SPRING |
| 17 | 7300821TMA | BRACKET, PTO |
| 18 | 165x116MA | SPRING |
| 19 | 690394E701MA | CRACK, PTO |
| 20 | 7300791ZMA | LINK, Lift |
| 21 | 95285MA | LINK, Lift Handle |
| 22 | 15x118MA | NUT, Flange |
| 23 | 017x57MA | WASHER |
| 24 | 0031x4MA | PIN, Hair |
| 25 | 017x91MA | WASHER |
| 26 | 001x74MA | BOLT, Hex |
| 27 | 690386E701MA | ARM ASSEMBLY, Right Lift |
| 28 | 7400254ZMA | LIFTER TUBE ASSEMBLY |
| 29 | 7300837ZMA | Plate, Lift Arm |
| 30 | 094067MA | PIN |
| 31 | 7300826ZMA | BRACKET, Rear Suspension |
| 32 | 094065MA | Bushing, Lift Tube |
| 33 | 009x53MA | BOLT, Shoulder |
| 34 | 7300819ZMA | BRACKET, Pivot |
| 36 | 17x191MA | WASHER |
| 37 | 015x84MA | NUT, Flange |
| 38 | 165x117MA | SPRING |
| 39 | 015x68MA | NUT, Flange |
| 40 | 7300796ZMA | BRACKET, PTO |
| 41 | 7300861ZMA | HANGER, Right Deck |
| 42 | 7300860ZMA | HANGER, Left Deck |
| 43 | 094158ZMA | ROD, Hanger |
| 44 | 7300784ZMA | HANGER, Front |

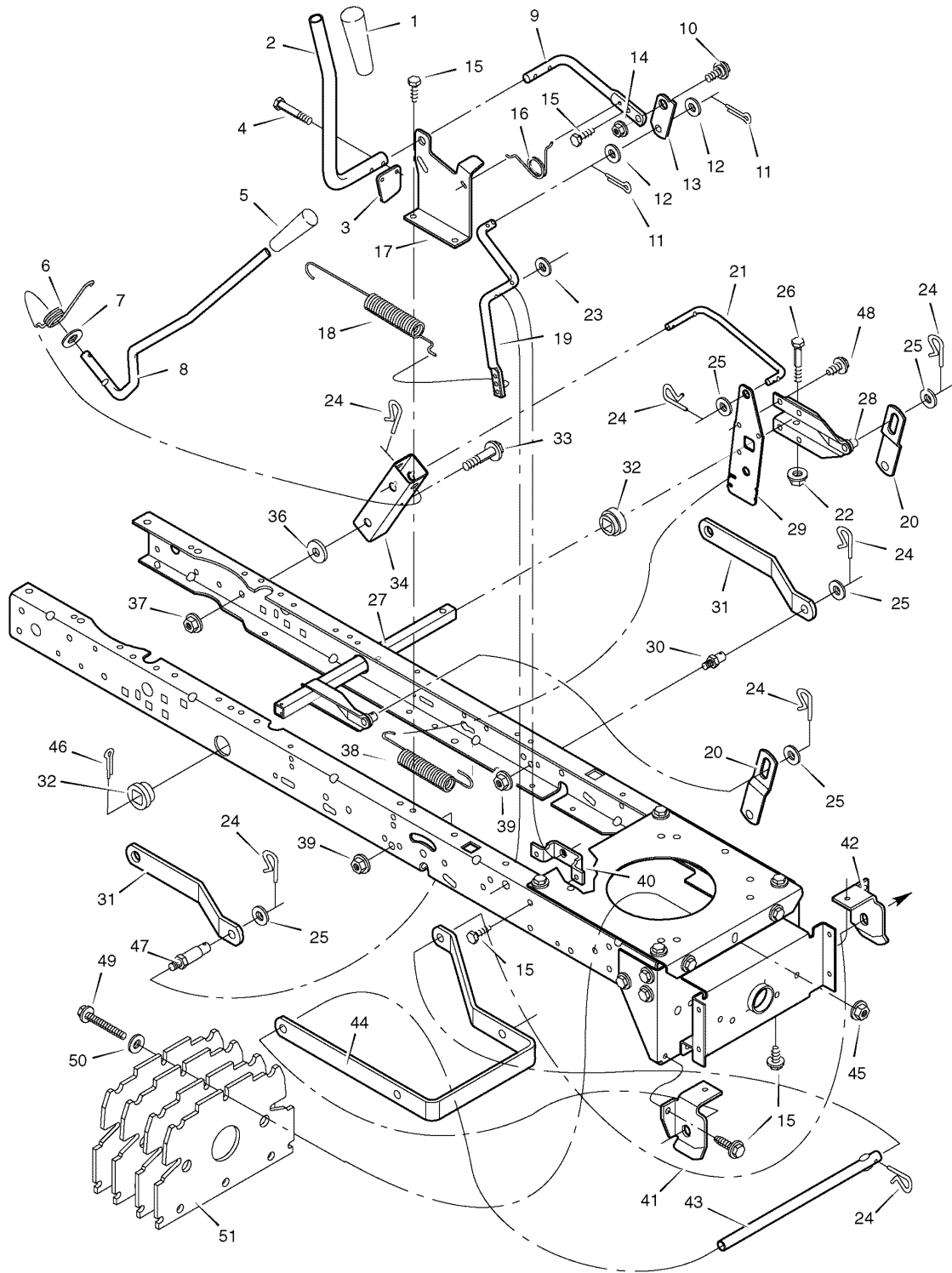
Footnotes

The above parts group applies to the following Mfg. Nos.:

7800274 - 312006x51A

Mower Housing Suspension

NOTE: Unless noted otherwise,
use the standard hardware torque
specification chart.



The above parts group applies to the following Mfg. Nos.:
7800274 - 312006x51A

Mower Housing Suspension

| REF NO | PART NO. | DESCRIPTION |
|---------------|-----------------|----------------------------|
| 45 | 015x89MA | NUT, Flange |
| 46 | 030x49MA | PIN, Cotter |
| 47 | 690382MA | PIN, Threaded Shoulder |
| 48 | 026x49MA | SCREW |
| 49 | 01x106MA | BOLT, Hex |
| 50 | 017x38MA | WASHER |
| 51 | 7300848ZMA | PLATE, Weight (4 Required) |

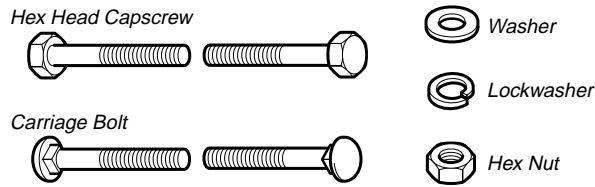
Footnotes

The above parts group applies to the following Mfg. Nos.:

7800274 - 312006x51A

Hardware Identification & Torque Specifications

Common Hardware Types

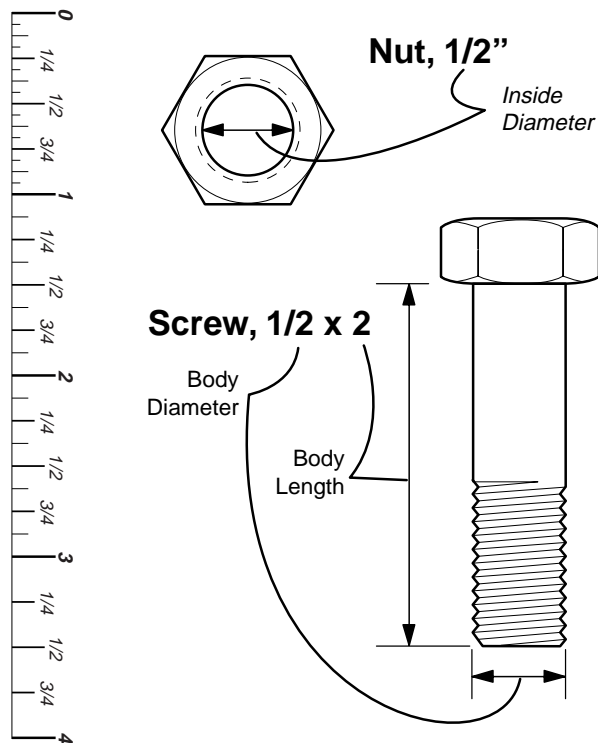


Standard Hardware Sizing

When a washer or nut is identified as 1/2", this is the *Nominal size*, meaning the *inside diameter* is 1/2 inch; if a second number is present it represents the *threads per inch*

When bolt or capscrew is identified as 1/2 - 16 x 2", this means the *Nominal size*, or *body diameter* is 1/2 inch; the second number represents the *threads per inch* (16 in this example, and the final number is the *body length* of the bolt or screw (in this example 2 inches long).

The guides and ruler furnished below are designed to help you select the appropriate hardware and tools.



Torque Specification Chart

FOR STANDARD MACHINE HARDWARE (Tolerance ± 20%)

| Hardware Grade | No Marks SAE Grade 2 | | SAE Grade 5 | | SAE Grade 8 | |
|----------------|-------------------------|-------|------------------|-------|------------------|---------|
| | in/lbs ft/lbs | Nm. | in/lbs ft/lbs | Nm. | in/lbs ft/lbs | Nm. |
| 8-32 | 19 | 2.1 | 30 | 3.4 | 41 | 4.6 |
| 8-36 | 20 | 2.3 | 31 | 3.5 | 43 | 4.9 |
| 10-24 | 27 | 3.1 | 43 | 4.9 | 60 | 6.8 |
| 10-32 | 31 | 3.5 | 49 | 5.5 | 68 | 7.7 |
| 1/4-20 | 66 | 7.6 | 8 | 10.9 | 12 | 16.3 |
| 1/4-28 | 76 | 8.6 | 10 | 13.6 | 14 | 19.0 |
| 5/16-18 | 11 | 15.0 | 17 | 23.1 | 25 | 34.0 |
| 5/16-24 | 12 | 16.3 | 19 | 25.8 | 27 | 34.0 |
| 3/8-16 | 20 | 27.2 | 30 | 40.8 | 45 | 61.2 |
| 3/8-24 | 23 | 31.3 | 35 | 47.6 | 50 | 68.0 |
| 7/16-14 | 30 | 40.8 | 50 | 68.0 | 70 | 95.2 |
| 7/16-20 | 35 | 47.6 | 55 | 74.8 | 80 | 108.8 |
| 1/2-13 | 50 | 68.0 | 75 | 102.0 | 110 | 149.6 |
| 1/2-20 | 55 | 74.8 | 90 | 122.4 | 120 | 163.2 |
| 9/16-12 | 65 | 88.4 | 110 | 149.6 | 150 | 204.0 |
| 9/16-18 | 75 | 102.0 | 120 | 163.2 | 170 | 231.2 |
| 5/8-11 | 90 | 122.4 | 150 | 204.0 | 220 | 299.2 |
| 5/8-18 | 100 | 136 | 180 | 244.8 | 240 | 326.4 |
| 3/4-10 | 160 | 217.6 | 260 | 353.6 | 386 | 525.0 |
| 3/4-16 | 180 | 244.8 | 300 | 408.0 | 420 | 571.2 |
| 7/8-9 | 140 | 190.4 | 400 | 544.0 | 600 | 816.0 |
| 7/8-14 | 155 | 210.8 | 440 | 598.4 | 660 | 897.6 |
| 1-8 | 220 | 299.2 | 580 | 788.8 | 900 | 1,244.0 |
| 1-12 | 240 | 326.4 | 640 | 870.4 | 1,000 | 1,360.0 |

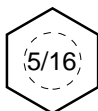
NOTES

- These torque values are to be used for all hardware excluding: locknuts, self-tapping screws, thread forming screws, sheet metal screws and socket head setscrews.
- Recommended seating torque values for locknuts:
 - for prevailing torque locknuts - use 65% of grade 5 torques.
 - for flange whizlock nuts and screws - use 135% of grade 5 torques.
- Unless otherwise noted on assembly drawings, all torque values must meet this specification.

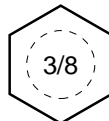
Wrench & Fastener Size Guide



1/4" Bolt or Nut
Wrench—7/16"



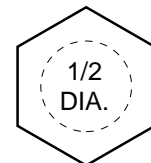
5/16" Bolt or Nut
Wrench—1/2"



3/8" Bolt or Nut
Wrench—9/16"



7/16" Bolt or Nut
Wrench (Bolt)—5/8"
Wrench (Nut)—11/16"



1/2" Bolt or Nut
Wrench—3/4"

